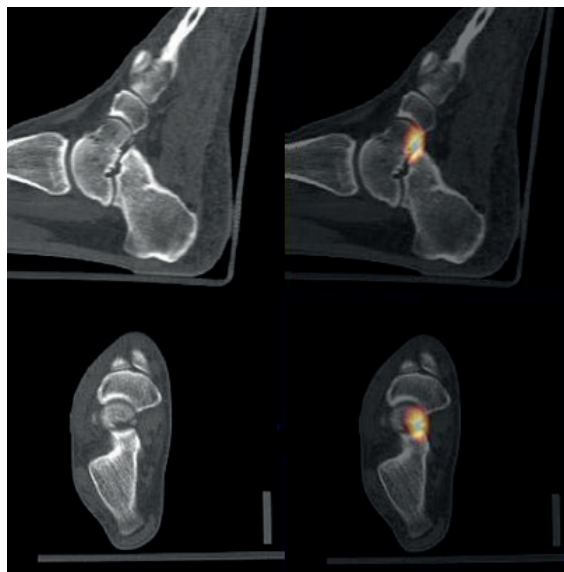


Foot support for SPECT/CT - PET/CT

Model 888.300



Images courtesy Amphia Hospital the Netherlands

Main applications

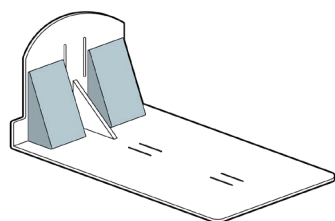
- Research
- Hospital

Product information

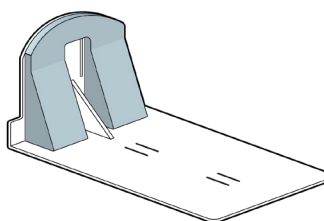
This support is specially designed to facilitate a comfortable position for the patient during medical procedures, while maintaining proper foot alignment. This support promotes patient comfort and is ideal for use during lengthy procedures as they contribute to better stability and reproducibility, regarding the target area.

Specifications

Overall dimensions 51 x 30 x 26 (LxWxH) in cm (approximate)



Model 888.300 + 886.008 (two pieces)



Model 888.300 + 886.113

FOR-MED is a trademark of VANDERWILT techniques, a development and manufacturing company, specialised in products for nuclear medicine such as patient positioning products, phantoms and shielding products.

Contact info@for-med.nl | www.for-med.nl