

Breast support prone position

model 886.019

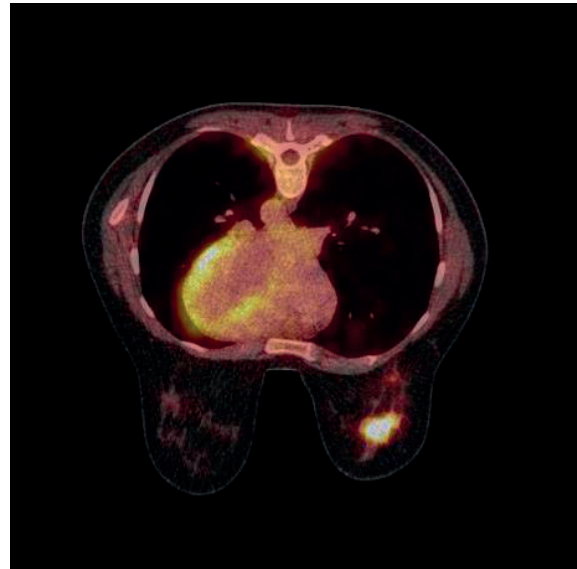
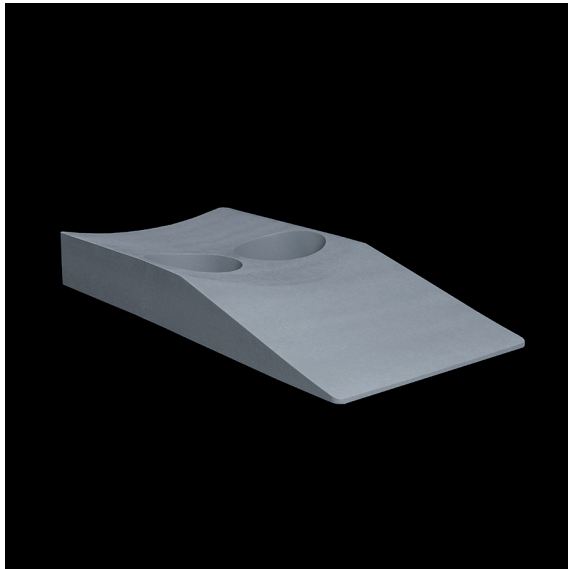


Image courtesy Meander Hospital, the Netherlands

General

The breast support is specially designed to facilitate a comfortable position for the patient during the breast prone procedure, while maintaining proper alignment.

Main applications

- Research
- Hospital

Specifications

Overall dimensions: 95 x 45 x 12 (LxWxH in cm)

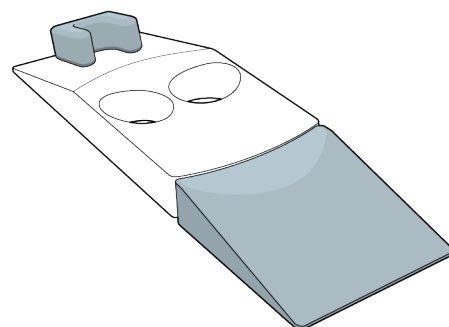
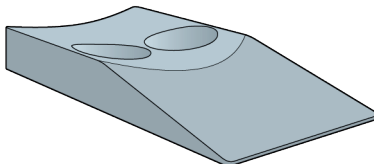
Main product

886.019 Breast support prone position

Accessories

886.088 Headrest front

886.091 Extension wedge



FOR-MED is a trademark of VANDERWILT techniques, a development and manufacturing company, specialised in products for nuclear medicine such as patient positioning products, phantoms and shielding products.

Contact info@for-med.nl | www.for-med.nl